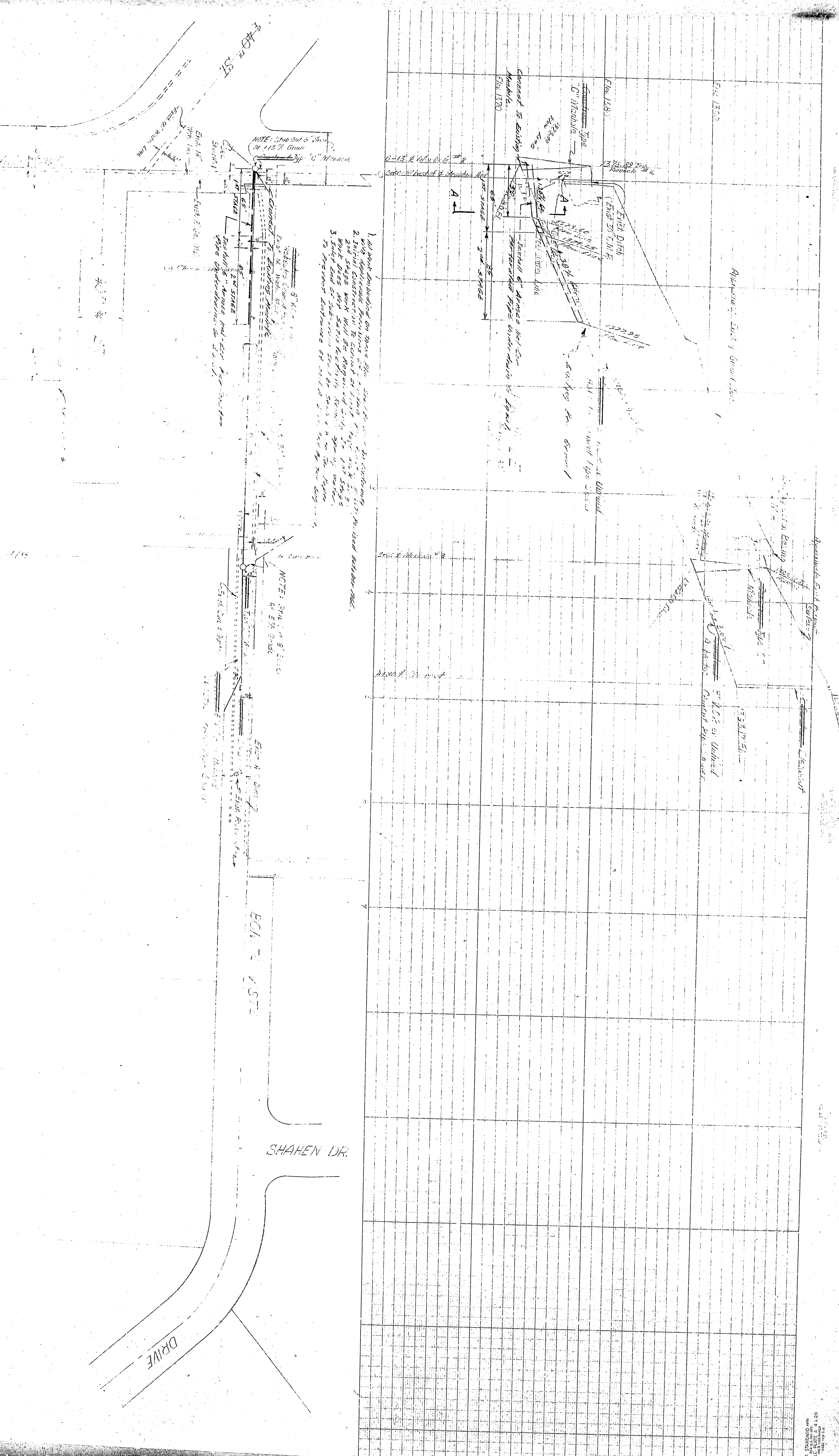


APPROVED	5-11-58	DEPARTMENT OF ENGINEERING
DESIGNED BY	W. J. ENGLISH	CITY OF SAN BERNARDINO
CHECKED BY	W. J. ENGLISH	PLANNING & PERMISSIVE DEPT.
RECOMMENDED BY	W. J. ENGLISH	FOR THE EMULGATION OF THE SEWER MAIN
		BEHIND VISTA - EAST OF MOUNTAIN VIEW
		FROM
		TO
		DATE
		BY
		NO.
		REV.



1. All work shall be done in accordance with the specifications.
2. All work shall be done in accordance with the specifications.
3. All work shall be done in accordance with the specifications.